

**DuraVeg**<sup>®</sup>  
**Bulletin**

**2024**

**Proven systems that reclaim  
and restore environments.**

# Bulletin 2024

Welcome to the latest release of the DuraVeg® Revegetation and Erosion Control Bulletin.

What a year it has been in the DuraVeg space already! We are proud to have been active right across Australia and New Zealand, in mining, infrastructure, renewables and landscaping.

As we head into the final quarter of 2024, we approach what is always a highlight of the DuraVeg year, the IECA Australasia conference. Erosion control is such a big part of the DuraVeg brand, therefore this year we are proud announce that we will be attending the conference as the Platinum Sponsor.

In the lead up to the conference we wanted to release a DuraVeg Bulletin that looks at the following things:

- Reflecting on some of our key case studies from the year
- Launching some noticeable product releases coming soon for the DuraVeg brand
- Discussing some initiatives we're getting behind
- Sharing what we're planning for the IECA Conference

Firstly though, since it's been a while since our last DuraVeg Bulletin, we'd like to take the chance to recognise our Australia and New Zealand Business Development Managers (BDMs), who've already put in a phenomenal year.

Newly elected member of the IECA Global Board of Directors, Joe Johnson remains an asset to our team and a well-known name in revegetation and erosion control. We are proud to have him as our New Zealand BDM and it is excellent to have him represent New Zealand as the first Kiwi appointed to the IECA Global Board.

In Australia, Mark Stidwill remains pivotal to everything DuraVeg, as he has since 2012. Mark is a wealth of knowledge in all things revegetation and erosion control and we are proud to have him as our Australia DuraVeg BDM.

Our full DuraVeg team will be in attendance at the IECA Conference in Queenstown this October. If you are attending the conference, come and visit our platinum exhibition stand in the main conference hall.



**Joe Johnson**  
Business Development Manager  
New Zealand



**Mark Stidwill**  
Business Development Manager  
Australia



Sustainable revegetation

## INSIDE THIS EDITION

The DuraVeg Team	03
Mt Messenger Bypass	04
The Mackay Marina Sand Dune Revegetation Project	05
Agrecovery Small Plastic Bags Recycling Programme	07
DuraVeg Lunch and Learns	08
Flexterra HP-FGM	09
Dust RX Hydro	10
The Road from Kimihia to Queenstown	11
Feature Profile Dallas Frazier	12

## Who are the DuraVeg<sup>®</sup> Team?

*Our Territory Managers are spread across all of Australasia, each well experienced and knowledgeable in revegetation.*

Our friendly team are more than happy to discuss your revegetation needs and are always available for consultations - free of charge.

Reach out to your region's Territory Manager today and let's discuss your next project.

### Meet our friendly team of DuraVeg Revegetation Managers



**MARK STIDWILL**

**Australia Business Development Manager  
Revegetation Territory Manager WA**

mstidwill@pgwturf.com.au  
+61 418 880 633



**JOE JOHNSON**

**New Zealand  
Business Development Manager**

jjohnson@pgwturf.co.nz  
+64 27 596 3565



**ADAM TOWNSING**

**Revegetation Territory Manager  
VIC / TAS**

atownsing@pgwturf.com.au  
+61 450 473 758



**RYAN SCHOFIELD**

**Revegetation Territory Manager  
NT / QLD**

rschofield@pgwturf.com.au  
+61 439 130 436



**DEON BIGGS**

**Revegetation Territory Manager  
NSW / SA / ACT**

dbiggs@pgwturf.com.au  
+61 499 801 980



# Mt Messenger Bypass

## IECA MEMBERS AND DURAVEG MEMBERS VISIT THE BYPASS PROJECT SITE

The Te Ara o Te Ata - Mt Messenger Bypass in Taranaki, New Zealand, is a pioneering infrastructure project focused on enhancing road safety and connectivity while prioritising environmental preservation. The project involves constructing a new 6-kilometre road that bypasses the challenging terrain of the existing SH3 route, providing a safer and more reliable connection between Taranaki and the rest of the country.

Members of the International Erosion Control Association (IECA), alongside Karen Crake, Mark Shaw, and Joe Johnson from the DuraVeg® team, recently visited the project site. Their day began with a cultural induction and an insightful briefing by the project's Environmental and Sediment Control (ESC) team and ecologists, who outlined the project's dual objectives of improving transportation efficiency and reducing environmental impact.

A key focus of the Te Ara o Te Ata - Mt Messenger Bypass project is the implementation of advanced erosion and sediment control measures. The project team is employing innovative techniques to protect the surrounding environment, including the use of green engineering methods. One of the standout strategies is the integration of hydraulic wood fibre mulch, specifically

Flexterra HP-FGM, which stabilises soils and prevents erosion while promoting vegetation growth. This mulch, made from recycled wood chips (a byproduct of the furniture industry), has been tested for biodegradability and EPA ecotoxicity, ensuring it decomposes naturally and leaves behind a stable, vegetated surface. Additionally, traditional methods like silt fences and sediment basins are used to manage stormwater runoff and prevent sediment from entering nearby waterways.

During the site tour, the IECA members observed these techniques in action. Slopes along the construction area had been hydroseeded, with vegetation already taking root, effectively preventing soil erosion and contributing to the biodiversity of the area. The use of mulch fibres in the seed slurry not only controls erosion but also supports the establishment of native plants, further enhancing the ecological balance of the region.

The field trip concluded with a Q&A session, where the IECA members and the DuraVeg team had the opportunity to discuss the challenges and successes of the Te Ara o Te Ata - Mt Messenger Bypass with the project team. This exchange of knowledge was invaluable, providing practical insights into the real-world application of erosion and sediment control measures.

The Te Ara o Te Ata - Mt Messenger Bypass is a model of how infrastructure development can be achieved without compromising environmental integrity. The innovative techniques and sustainable practices being implemented set a new benchmark for future projects. For the IECA members and the DuraVeg team, this field trip was not only an educational experience but also a source of inspiration for promoting best practices in erosion and sediment control in their own work.

As infrastructure development continues to evolve, the lessons learned from the Te Ara o Te Ata - Mt Messenger Bypass project will undoubtedly guide efforts toward a more sustainable and environmentally conscious future. DuraVeg from PGG Wrightson Turf extends its gratitude to the Te Ara o Te Ata - Mt Messenger Bypass Project team and the Australasian chapter of the IECA for an enlightening and inspiring day.



**A VERY POSITIVE DAY FOR THE IECA AND DURAVEG TEAMS**



BEFORE APPLICATION (SEE THE PAGE OVER FOR THE SAME PROJECT AFTER APPLICATION)

## ***The Mackay Marina Sand Dune Revegetation Project***

*The dunes on E Point Road in Mackay Harbour are a critical component of a fragile ecosystem.*

The project aimed to restore these dunes while protecting the surrounding wetlands, river system, and Bassett Basin, supporting sustainable development in the region.

The primary goal was to restore and stabilise the dunes using native grasses to reduce erosion, sedimentation, and sand leaching into nearby waterways.

DuraVeg® was approached by a local customer to assess the problem and provide a solution that ensured a successful outcome by achieving the objectives with a cost-effective solution. The strategy involved the following elements:

Dune instability stems from sand being hydrophobic and exhibiting low interlocking characteristics. To stabilise the slope of a dune, it is necessary to cover the slope in a substance with high interlocking characteristics while providing a natural habitat for grasses to establish.

ProGanics Dual™ was the ideal hydro-mulch for the job. This product wicks with the sand surface to form a permeable erosion-resistant blanket that not only provides temporary slope stabilisation but allows for rapid seed germination and grass growth. This is achieved by combining the benefits of a bonded fibre matrix and biotic soil media.

A comprehensive Profile Soil Solutions Software (PS3) Soil Analysis was conducted to evaluate the chemical composition and biological content of the sand, aiming to determine the optimal growing conditions. The analysis revealed the following key findings (overleaf):



### KEY FINDINGS

- The analysis indicated a very low organic matter content of 0.3%. This suggested a need for significant supplementation, with ProGanics Dual™ recommended at 7.6 tons per hectare.
- The pH level of the soil was found to be 6.8, which is within the optimal.
- The analysis identified a slight deficiency in calcium, suggesting the addition of Gypsum to address any potential salt accumulation in the sand. It is recommended that 9 litres of Gypflo be applied per hectare.
- The soil exhibited a balanced NPK (nitrogen, phosphorus, potassium) profile. However, for long-term sustainability, it was advised to incorporate a slow-release nitrogen product to enhance nutrient availability over time.

The seed mix was influenced by the local conditions and needed to be low growing, salt tolerant and handle low water conditions. It was proposed to use a mix of Couch, Bahia, Rhodes and Digitaria grasses.

The ProGanics Dual, seed mix, fertiliser and Gypflo slurry were applied in October 2020. A temporary irrigation system was set up to ensure moisture during the critical establishment phase. However, its effectiveness was limited, as the sprinklers failed to reach the upper areas of the dunes. Consequently, there was a delay in establishing grass cover across the entire dune.

Despite challenges with the irrigation system, which limited moisture distribution, the project achieved 100% vegetation coverage on the dunes, thanks to favourable rainfall and effective soil enhancement.

The Mackay Marina Sand Dune Revegetation Project demonstrates successful ecological restoration. Despite irrigation setbacks, strategic planning and the use of ProGanics Dual led to the project's success, offering valuable insights for future coastal ecosystem preservation.



#### TOP IMAGE:

After Application. Great establishment, and revegetation.

#### BOTTOM IMAGE:

ProGanics Dual in action - Notice the distance covered upon application



## Agrecovery Small Plastic Bags Recycling Programme

The NZ Agrecovery LDPE and Small Bag Scheme is a sustainable solution for recycling seed, feed and fertiliser bags. Bags made of LDPE (No. 4 Plastic) and BOPP (No. 5 Plastic) that are in keeping with the eligibility criteria, can now be collected by Agrecovery and recycled as part of their product stewardship plan. Product stewardship is the acceptance of responsibility by manufacturers, brand owners, importers and retailers, for reducing a product's environmental impact. It has become much more than just recycling. Product stewardship adapts a lifecycle approach to products, beginning with the design of the product's packaging through

to its use and then disposal, ensuring the smallest environmental footprint. The concept moves away from a linear – make, take and waste economy – to a circular model, where waste is recovered, recycled and reused. For PGG Wrightson Turf this includes all the LDPE bags from our suppliers: The Andersons, Profile Products and Wilbur Ellis, as well as our PGG Wrightson Turf seed bags; thereby incorporating the recycling programme for a more sustainable supply chain. The operation is completely free to take part in – from registering a business, to obtaining the Agrecovery bag liners and zip ties; the recycling programme is designed to be as easy to take part in as possible. The recycle

process is completely free. Participants are encouraged to register their business with Agrecovery and simply order the bag liners and zip ties that hold the recycled bags. With over 200 small bag collection sites across New Zealand (and more coming soon), it has become very easy to now drop off used bags to be recycled. A bag recycling programme for Australia is in the works too.



DuraVeg bales ready to go out, from the PGG Wrightson Turf Warehouse.






## DuraVeg® Lunch and Learns

DuraVeg®, through PGG Wrightson Turf, would like to give you an educational workshop on solutions for revegetation, soil and erosion control.

## THE 5 FUNDAMENTALS

### LEARNING OBJECTIVES:

The five fundamentals of successful Revegetation and Erosion Control

-  Soil testing – Create optimal soil conditions
-  Seed quality and species selection
-  Hydraulically Applied Technologies – Learn the differences between application niches for advanced hydraulically applied erosion control
-  Ensuring proper installation
-  Follow-up inspections and maintenance practices

**This will provide attendees with a holistic approach to any projects that involve revegetation.**



PGW Turf NZ South Island Sales Manager, Brendon O'Hara, leads a Lunch and Learn.

**Scan the QR Code to register your interest for an upcoming Lunch & Learn:**







## Flexterra HP-FGM<sup>TM</sup>

DuraVeg® understands the significance of getting the right product for the right slope. We take into account the slope shear, the slope length, and all forces acting on the product once applied, such as downhill water force.

Flexterra High Performance - Flexible Growth Media (HP-FGM) continues to stand out as a premier solution in erosion control, revolutionising Flexible Growth Media with its unparalleled effectiveness and environmental benefits. This advanced product eliminates the need for intensive soil preparation, it offers immediate protection and superior performance.

Boasting the highest germination rates

and growth establishment, Flexterra HP-FGM achieves over 99% erosion control effectiveness upon application. Its 100% biodegradability and non-toxic composition ensure safety for sensitive aquatic environments while promoting denser vegetation and natural habitat protection. From steep slopes to water management projects and fine turf areas, Flexterra HP-FGM provides reliable, sustainable solutions across various applications.

**In rigorous testing, Flexterra HP-FGM has proven its capability on slopes as severe as 0.25H:1V, significantly reducing soil loss and runoff turbidity.**

It surpasses industry standards in vegetation establishment, ensuring long-term erosion control by maintaining seed and nutrient

integrity through periods of dormancy.

**Documented under ASTM (American Society for Testing and Materials) protocols, Flexterra HP-FGM demonstrates functional longevity of up to 18 months, outlasting competing products and supporting diverse plant species to withstand environmental stress.**

With its innovative blend of effectiveness, sustainability, and longevity, Flexterra HP-FGM sets a new standard in erosion control, empowering projects to thrive while preserving natural ecosystems. Whether on challenging terrains or environmentally sensitive sites, Flexterra HP-FGM delivers unmatched performance, making it the preferred choice for professionals seeking reliable erosion control solutions worldwide.



## Dust RX Hydro™

*DuraVeg® are pleased to announce the launch of Dust RX Hydro™. Environmentally friendly dust control for construction, transportation, and renewable energy development*

Dust RX Hydro is specifically formulated for application using both water trucks and hydroseeding equipment, providing you with a way to extend your season and offer more services. Dust RX Hydro represents a groundbreaking, environmentally friendly dust control solution that is entirely biodegradable and engineered for utilisation in conventional water trucks and hydroseeders. The fine particles are coated with a proprietary agent that briefly delays the hydration process upon introduction into the water tank. This unique feature ensures that the product disperses uniformly in water before becoming soluble, yielding a seamless, clump-free mixture ideal for a variety of dust control applications.

### Agronomic Solution

Setting out to develop a temporary solution to fugitive dust, Profile® Products created an agronomically and environmentally responsible formulation. Unlike salt-based or synthetic polymer alternatives, Dust RX Hydro does not degrade soil, adversely affect surrounding vegetation, or introduce synthetic polymers to the job site.

### Dust Suppression Performance

With greater functional longevity than traditional watering practices, you benefit from reduced water usage and fuel consumption on the job site. Experience cost savings on construction sites, maintenance roads, mining and energy development sites. Dust RX Hydro is also a great solution for recreational venues, fair sites and equine arenas.

### Ease of Application

Dust RX Hydro is specifically formulated for use in water trucks and hydroseeders. Spray from the hydroseeder tower or hose without fear of clumping, fish-eyes or

corrosive wear on equipment.

### Ease of Storage

Dust RX Hydro is supplied to clients in dry form, in 22.68kg DuraVeg® bales. The dry form bales allow for ease of storage and transportation savings. The product can be then added to a water truck, or hydroseeder in a controlled fashion for easy application.

Dust RX Hydro offers a dust suppression solution for construction sites, unpaved light-traffic roads, parking lots and recreational venues. Free of solvents and chlorides, Dust RX Hydro is non-corrosive on hydroseeding equipment and water trucks.



# The Road from Kimihia to Queenstown

**DURAVEG® ARE PUTTING ON A SHOW ON THEIR WAY TO THE IECA CONFERENCE**

This year, DuraVeg® is proud to demonstrate our strong commitment to the International Erosion Control Association (IECA) by participating as the Platinum Sponsor of the IECA Australasian Conference.

In line with our dedication, we are thrilled to introduce “The Road to Queenstown” initiative, aimed at facilitating even greater participation in this year’s conference.

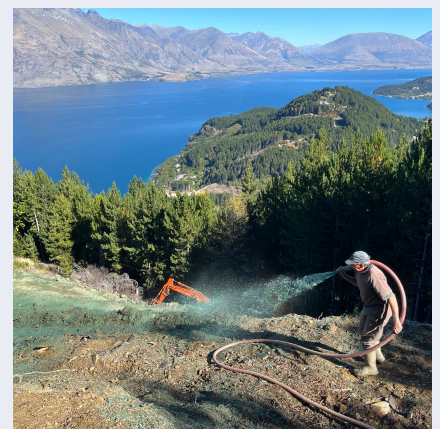
Beginning on October 13th, DuraVeg, in partnership with PGG Wrightson Turf, will be hosting over 35 delegates from across Australia and New Zealand. These attendees will be flown into Christchurch, where they will enjoy two nights at the Rydges Latimer Hotel, offering them a chance to experience Christchurch City

During their stay, delegates will spend a day at the Kimihia Research and Plant Breeding Facility in Lincoln. Here, they will

tour PGG Wrightson Turf’s grass trials, visit the seed laboratory, and gain a deeper understanding of the science behind the seed innovations used in DuraVeg products.

Following their time in Christchurch, the group will embark on a scenic journey to Queenstown, with several notable stops along the way. The itinerary includes visits to PGG Wrightson Seed’s production paddocks and Agripro’s seed cleaning facilities. For those visiting New Zealand for the first time, the trip also offers a chance to see iconic landmarks, including the Church of the Good Shepherd and Aoraki/Mount Cook, before arriving in Queenstown.

We are looking forward to an impactful presence at this year’s IECA Australasian Conference. Be sure to visit our booth and say hello—we look forward to connecting with you there!



**FEATURED PROFILE**

## Dallas Frazier

IECA Director and Environmental Manager



**How long have you been in the industry?**

I have been in the construction industry for 27 years, beginning as an apprentice carpenter in New South Wales. As I progressed in my career, I worked in various roles across Australia, including as a maintenance worker, stonemason, carpenter, and site supervisor, gaining broad experience in residential and commercial buildings. My transition to the revegetation industry began while working as a bridge carpenter on the Tugun bypass, where I encountered environmental management for the first time. Intrigued by the focus on protecting endangered species and site-specific environmental controls, I enrolled

in a conservation and land management course at TAFE and eventually joined the project's environmental team.

After a return to construction with heightened environmental awareness, I worked on a water pipeline project on the Sunshine Coast, where I assisted with erosion and sediment control, crucial for successful rehabilitation. This project introduced me to large-scale rehabilitation and best practices in environmental management. Encouraged by my manager, I pursued a degree in environmental science while continuing to work on civil infrastructure projects over the next 14 years.

**What is your biggest motivator?**

My biggest motivators are sustainability and education. I've witnessed significant cultural shifts in the industry, particularly with the introduction of sustainability ratings on large projects, which have driven innovation and improvement. I've been fortunate to work alongside industry leaders who have mentored me, and now I'm motivated to give back by mentoring others and promoting best practices in environmental management.

**Something interesting about you...**

Outside of work, I live sustainably on a small acreage on the Sunshine Coast, where we grow our own food and care for native animals. I seem to have become the local snake catcher.

## DuraVeg® Contacts

 [facebook.com/pggwrightsonturf](https://facebook.com/pggwrightsonturf)

 [linkedin.com/company/duraveg](https://linkedin.com/company/duraveg)

PGG Wrightson Turf is a trading division of PGG Wrightson Seeds Ltd (PGW Seeds). PGW Seeds provides no assurance, guarantee, representation or warranty in relation to any advice, information, service, seed, endophyte, product or treatment (together Material) other than those that must be provided by law. To the extent permitted by law PGW Seeds excludes or limits liability (including for indirect and consequential loss) on any basis (including in negligence and under any enactment) from or in relation to the Material and any remaining liability shall not exceed twice the amount received by it in relation to the Material.

**NEW ZEALAND**

**CUSTOMER SERVICE**

info@pggwrightsonturf.co.nz  
 Freephone 0800 749 8873  
 or +64 3 966 9309

[www.duraveg.co.nz](http://www.duraveg.co.nz)

**JOE JOHNSON**

**New Zealand Business Development Manager**

jjohnson@pgwturf.co.nz  
 +64 27 596 3565

**AUSTRALIA**

**CUSTOMER SERVICE**

info@duraveg.com.au  
 Freephone 1800 3872 8873  
 or +61 3 8379 7412

[www.duraveg.com.au](http://www.duraveg.com.au)

**MARK STIDWILL**

**Australian Business Development Manager**

mstidwill@pgwturf.com.au  
 0418 880 633