



NUTURF®

FOLIIMAX®

FULL RANGE GUIDE

Liquid nutrition at its best

FoliMAX RANGE

The range in review



MAJOR NUTRIENTS - NPK PRODUCTS

PRODUCT	DESCRIPTION	ANALYSIS	RATE PER		KEY TECHNOLOGIES	PACK SIZE
			HA	100m ²		
FoliMAX N-Hancer-N	A highly stable non-corrosive liquid fertiliser solution containing 70% controlled release nitrogen incorporating new generation SRN-IQ Technology that provides excellent turf safety, increased nitrogen absorption, and unparalleled extended nitrogen release.	35-0-0	35 – 120L	0.35 – 1.2L	SRN-IQ Technology	20L 200L 1000L
FoliMAX N-Forcer-N	High analysis liquid nitrogen formulation containing dual action technologies of nitrification inhibitors and SRN-IQ to provide a consistent, uniform delivery of nitrogen via two different release mechanisms over an extended period.	30-0-0	50 – 140L	0.5 – 1.4L	Ammonium Stabiliser and SRN-IQ Technology	20L 200L 1000L
FoliMAX NRG-NK	A balanced nitrogen and potassium fertiliser containing SRN-IQ Technology nitrogen and the superior potassium citrate / carbonate complex, for rapid uptake and healthy turf response to foliar applications.	19-0-13 + 0.4% Fe	65 – 160L	0.65 – 1.6L	SRN-IQ & Dual Potassium Technology	20L 200L 1000L
FoliMAX Vigor K	A chloride free, high potassium formulation including potassium as highly available citrate combined with the slowly available carbonate form. For rapid uptake to correct deficiencies and provide greater turfgrass strength over the long term.	0-0-30	20L – 50L	0.2 – 0.5L	Dual Potassium Technology	20L 200L 1000L
FoliMAX Turbo	A high potassium analysis formulation incorporating SRN-IQ Technology nitrogen that extends release for uniform turf growth.	10-0-20	40 – 125L	0.4L – 1.25L	SRN-IQ & Dual Potassium Technology	20L 200L 1000L
FoliMAX Launcher	A liquid nutrition and biostimulant package formulated specifically to fulfil essential plant requirements during the establishment and grow-in phases, and during period of high turfgrass stress. A high phosphorous NPK ratio with the addition of kelp provide the plant with the required building blocks for healthy and vigorous establishment, stress resistance, and injury recovery.	8-10-5 + Kelp	10 – 30L	0.1L – 0.3L	Nutritional and Biological Growth Stimulant	20L
FoliMAX Phosphite+	A highly concentrated formulation of phosphorus as potassium phosphite. Rapidly plant available via both the foliage and roots, FoliMAX Phosphite+ can quickly correct potassium deficiencies whilst also activating the plants own immune defence response to pathogens, providing improved plant vigour, health and growth. The addition of Vitamin B1 provides an additional support for root development.	0-22-42	6 – 15L	60 – 150mL	Potassium Phosphite Technology	20L 200L



TRACE ELEMENTS

PRODUCT	DESCRIPTION	ANALYSIS	RATE PER		KEY TECHNOLOGIES	PACK SIZE
			HA	100m ²		
FoliMAX NFE	Reliable liquid iron and manganese formulation with ammonium stabilised nitrogen source designed to correct iron deficiencies and maintain plant growth. Ideal for quick and sustained green up of the turf sward, where colour and aesthetics are important.	15-0-0, 6% Fe, 2% Mn.	20L – 50L	0.2 – 0.5L	Ammonium Stabiliser & Fe EDTA Chelate Technology	20L 200L 1000L
FoliMAX Iron+	Economical fast acting iron source for rapid greening and correction of iron deficiencies in turf situations.	6% Fe	20 – 50L	0.2 – 0.5L	Nutrex Delivery Technology	20L 200L
FoliMAX Trace+	Multi-trace element liquid fertiliser formulation enhanced with Nutrex Delivery Technology for efficient nutrient uptake and internal plant mobility. Corrects and prevents trace element deficiencies to maintain healthy turf growth.	B 0.24%, Cu 0.06%, Mn 1.08%, Mg 0.6%, Zn 5.69%.	10 – 20L	0.1 – 0.2L	Nutrex Delivery Technology	20L
FoliMAX Manganese+	Highly available manganese formulation utilising Nutrex Delivery Technology to ensure rapid nutrient uptake and internal plant mobility. Corrects manganese deficiencies in turf which can assist in patch disease prevention. The formulation also has excellent tank mix flexibility properties.	8-0-0 + 6% Mn	10 – 30L	0.1 – 0.3L	Nutrex Delivery Technology	20L
FoliMAX Strength SI	A unique liquid fertiliser containing ideal ratios of silica, calcium and potassium. When applied as a foliar spray, these nutrients work in synergy to strengthen the cell and thus hardening the tissue to enhance and strengthening stress resistance to foliar pathogens and surface traffic in fin cut turf.	9.1% Si, 2.1% Ca, 5% K	5 – 10L	0.05 – 0.1L	Synergistic Turf Strengthener	10L

CALCIUM AND MAGNESIUM PRODUCTS

PRODUCT	DESCRIPTION	ANALYSIS	RATE PER		KEY TECHNOLOGIES	PACK SIZE
			HA	100m ²		
Folimax Cal-Mag	A liquid sodium fighter containing calcium and magnesium in a very soluble nitrate form for rapid flushing of sodium from the root-zone. With ideal calcium to magnesium ratio, FoliMAX Cal-Mag can also be used in a maintenance program for prevention of calcium and magnesium deficiencies within the turfgrass.	13% Ca, 3.4% Mg, 11% N.	10 – 20L	0.1 – 0.2L	Rapid Sodium Displacement	20L 200L
FoliMAX Calcium+	Liquid fertiliser solution containing 15% calcium with Nutrex Delivery Technology. The Nutrex delivery system harnesses plant carbohydrates within the solution as a catalyst to optimise nutrient uptake through the foliage, maximising application efficiency. For the prevention and correction of calcium deficiencies.	15% Ca	10 – 20L	0.1L – 0.2L	Nutrex Delivery Technology	20L 200L
FoliMAX Magnesium+	A magnesium formulation ensuring rapid uptake of Mg into the plant, ideal for the prevention and correction of magnesium deficiencies. Excellent tank mix flexibility properties.	6-0-0 + 5% Mg	20 – 50L	0.2 – 0.5L	Nutrex Delivery Technology	20L

BIOSTIMULANTS AND GROWTH PROMOTERS

PRODUCT	DESCRIPTION	ANALYSIS	RATE PER		KEY TECHNOLOGIES	PACK SIZE
			HA	100m ²		
FoliMAX KelMAX	KelMAX, derived from Ecklonia maxima seaweed, is a premium quality natural kelp product developed specifically for the needs of professional turfgrass. The unique characteristics of this seaweed species and the proprietary method of hormone extraction, results in a biostimulant with the ideal auxin to cytokinin ratio to trigger maximum root response, improving the density and depth of root systems.	100% Concentrated Kelp Extract	5 – 20L	50 – 200mL	Ecklonia maxima seaweed	20L 200L
FoliMAX Humic+	Liquid Humic Acid (organic catalyst) which increases microbiological activity in the soil. Improves soil structure, fertility and water holding capacity. Ideal for use at renovation and turf establishment or as a maintenance tool on sand profiles.	12% Humic Acid	10 – 20L	0.1 – 0.2L	Humic Enhanced Technology	20L 200L
FoliMAX Amino+	A unique combination of amino acids derived from enzymatically digested plant protein, Vitamin B1 for improved root growth and disease resistance and plant growth promoters for optimising plant response in times of stress.	Amino Acids Fructose Auxins	10 – 20L	0.1 – 0.2L	Amino Acid Enhanced Technology	20L

NUTRIENT COMPOSITION

Product	N%	P%	K%	Ca%	Mg%	Fe%	Mn %	B%	Zn	Cu	Si	Seaweed	Humic Acid	Amino Acid	Auxins	Fructose	Vitamin B1
FoliMAX N-Hancer-N	35	-	-	-	-	-	-	-	-	-	-	-	-	-	-	-	-
FoliMAX N-Forcer-N	30	-	-	-	-	-	-	-	-	-	-	-	-	-	-	-	-
FoliMAX NRG-NK	19.1	-	12.7	-	-	0.4	-	-	-	-	-	-	-	-	-	-	✓
FoliMAX Vigor K	-	-	30	-	-	-	-	-	-	-	-	-	-	-	-	-	✓
FoliMAX Turbo	10	-	20	-	-	-	-	-	-	-	-	-	-	-	-	-	-
FoliMAX Launcher+	8	10	5	-	-	-	-	-	1	-	-	✓	-	-	✓	-	-
FoliMAX Phosphite+	-	22.25	42.5	-	-	-	-	-	-	-	-	-	-	-	✓	-	✓
FoliMAX NFE	15	-	-	-	-	6	2	-	-	-	-	-	-	-	-	-	-
FoliMAX Iron+	-	-	-	-	-	6	-	-	-	-	-	-	-	-	-	-	-
FoliMAX Trace+	-	-	-	-	0.6	-	1.08	0.24	5.69	0.06	-	-	-	-	-	-	-
FoliMAX Magnesium+	6	-	-	-	5	-	-	-	-	-	-	-	-	-	-	-	-
FoliMAX Manganese+	8	-	-	-	-	-	6	-	-	-	-	-	-	-	-	-	-
FoliMAX Calcium+	-	-	-	15	-	-	-	-	-	-	-	-	-	-	-	-	-
FoliMAX Cal-Mag	11.2	-	-	13	3.4	-	-	0.1	-	-	-	-	-	-	-	-	-
FoliMAX KelMAX	-	-	-	-	-	-	-	-	-	-	-	✓	-	-	✓	-	-
FoliMAX Humic+	-	-	-	-	-	-	-	-	-	-	-	-	✓	-	-	-	-
FoliMAX Amino+	2.89	-	-	-	-	-	-	-	-	-	-	-	-	✓	✓	✓	-
FoliMAX Strength SI	-	-	5	2.1	-	-	-	-	-	-	9.1	-	-	-	-	-	-

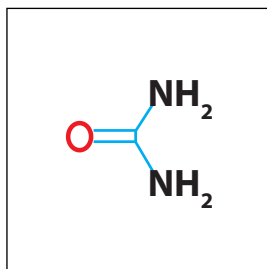
FoliMAX

The technology behind the range

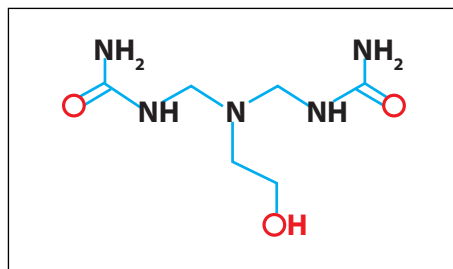
SRN-IQ NITROGEN TECHNOLOGY

SRN-IQ Nitrogen technology

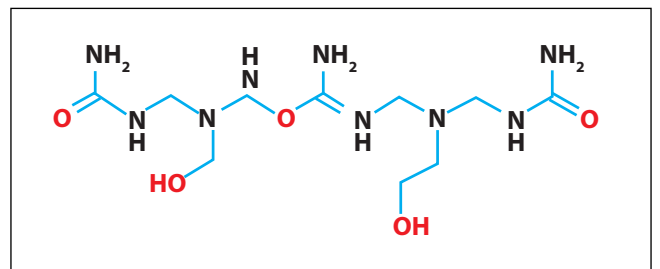
The SRN-IQ Nitrogen technology is a true liquid, polymethylene urea solution which has an oily, resinous quality. The SRN-IQ Nitrogen technology has a linear molecular structure, which allows it to be more compact than other slow release nitrogen technologies, and therefore provides it with significantly improved foliar uptake capabilities compared to other liquid methylene urea products.



Simple Urea



Methylene Urea



Polymethylene Urea

- **Rapid Plant Uptake:** The SRN-IQ Technology is readily received across the cell membrane, where it is translocated for storage, metabolism, and use. The majority of the SRN-IQ Nitrogen can be found inside the plant within 6-8 hours of application.
- **Superior Slow Release Nitrogen:** Once absorbed into the plant, the SRN-IQ Nitrogen is metabolised over time, creating a slowly available source of nitrogen within the plant itself over a period of 6-8 weeks.
- **Enhanced Soil Activity:** As SRN-IQ Nitrogen is dispersed in the soil capillary action draws free water away from the resinous nitrogen molecules, resulting in the formation of a polymerised source of nitrogen within the plants root system. This loss of water causes the SRN-IQ Nitrogen to gel and polymerize. As this occurs, warm temperatures, moisture availability, and especially microbial action all become necessary to convert the less soluble nitrogen forms into usable nutrition units in the root zone for the plant to uptake.
- **Non-Corrosive Formulation:** Unlike other liquid nitrogen sources, SRN-IQ does not cause corrosion to spray equipment. This is clearly demonstrated in the below trial, where nails have been placed in N-Hancer-N and a Urea based solution.



Figure 1. Mild steel nails immersed in 20% strength solutions of UAN and N-Hancer-N for 48 hours



Figure 2. Mild steel nails removed from nitrogen solutions after 48 hours



AMMONIUM STABILISED N TECHNOLOGY

The Ammonium Stabilised Technology incorporates a nitrification inhibitor called DMPP. This component inhibits the activity of Nitrosomonas bacteria in the nitrification cycle, delaying the transformation of ammonium (NH_4) to nitrate (NO_3), which is the most plant available form of nitrogen. Therefore during the active phase of DMPP (4 to 10 weeks, depending on soil temperature and soil humidity) the restrained release of nitrogen into an available form steadily feeds the plant over several weeks while significantly reducing nitrogen losses to leaching and volatilisation. This improvement in fertiliser performance results in economic benefits as the turf manager can extract more plant response from the nitrogen applied, as well as environmental benefits through a reduction in atmospheric and ground water pollution of ammonia

NUTREX DELIVERY TECHNOLOGY

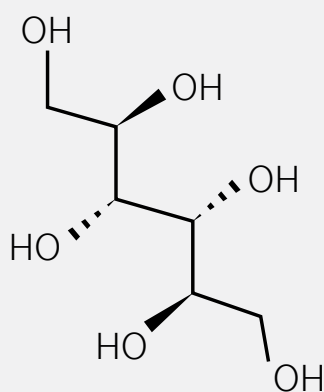
Nutrex™ Delivery Technology is a novel technology designed to enhance foliar uptake of liquid nutrition products, and optimise internal mobility of the applied nutrient. This vastly improves the efficiency of applications of fertilizer formulations containing the Nutrex™ Delivery Technology, resulting in minimal nutrient loss and

optimum plant response. Nutrex™ Delivery Technology works by complexing the relevant nutrient with a plant-derived carbohydrate called Glucitol ($\text{C}_6\text{H}_{14}\text{O}_6$). The carbohydrate molecule is recognised by the plant as a desirable compound and is efficiently taken into the leaf and mobilised throughout the plant's vascular system.

The key advantages of Nutrex™ Delivery Technology are:

- Enhanced uptake and nutrient delivery to the plant's vascular system.
- Integrated surfactant package for optimised surface spreading, further enhancing foliar uptake.
- Natural humectants within the formulation prolong drying time on the leaf to extend the uptake window.
- Improves internal mobility of applied nutrients, getting the nutrient to where it needs to be faster, and with less expense of energy to the plant.
- Provides a source of energy to the plant as the carbohydrate is metabolised internally.

The small size and compact structure of the Nutrex™ molecule are unique among chelating compounds, making it an extremely efficient uptake catalyst. The result is a superior chelate option compared to other commonly used nutrient carriers which are generally much larger and can hinder foliar absorption.



Nutrient Carrier	Molar Mass (mol)
Nutrex™	182
Glucosheptonate	248
EDTA	292
Lignosulphonate	>500
Fulvic Acid	>1,000
Humic Acid	>10,000

Name	Glucitol
Class	Carbohydrate
Structure	$\text{C}_6\text{H}_{14}\text{O}_6$
Mass	182 mol

1. Enhanced Foliar Uptake

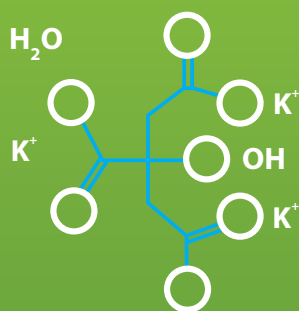
- Small, compact chelate molecule ideal for foliar uptake
- Integrated surfactant package
- Acidic pH conducive to cuticle penetration
- Natural humectants for prolonged drying time

2. Efficient Mobility and Translocation

- Nutrex™ molecule is recognised by the plant and immediately assimilated
- Translocated through the phloem of the plant
- Extremely efficient delivery of nutrient to required nutrient sinks

DUAL POTASSIUM TECHNOLOGY

The potassium in FoliMAX Vigor – K is present as a citrate/carbonate complex. Having dual forms of potassium optimises availability of the nutrient, both via the leaf and the soil for maximum nutrient efficiency.



The potassium citrate component provides a citrate molecule which is found in all plants, and this form of potassium is immediately recognised and assimilated by the plant maximising leaf uptake. Potassium citrate is ideal for immediate correction of potassium deficiencies within the plant.



The potassium carbonate form is ideal for plant uptake in the soil environment and also has the additional benefits of enhancing disease resistance properties within the turfgrass plant. Potassium carbonate remains within the soil over an extended period as it continues to provide a long term source of potassium.

Product	Salt Index
Potassium Chloride	120.1
Potassium Nitrate	69.5
Potassium Thiosulphate	68.0
Potassium sulphate	42.6
Potassium Carbonate	<20
Potassium Citrate	<10

Both forms of potassium present within the Dual Potassium Technology possess superior plant safety due to their low salt index. Higher salt index fertilisers have a greater potential to cause foliar burn. The lower the salt index the lower the potential for phytotoxicity. Both potassium carbonate and potassium citrate have very low salt index when compared with conventional potassium sources.

LIQUID NUTRITION PHYSICAL COMPATIBILITY GUIDE

Product	FoliMAX Amino+	FoliMAX Calcium+	FoliMAX Cal-Mag	FoliMAX Humic+	FoliMAX Iron+	FoliMAX KelMAX	FoliMAX Launcher	FoliMAX Magnesium+	FoliMAX Manganese+	FoliMAX NFE	FoliMAX N-Forcer-N	FoliMAX N-Hancer-N	FoliMAX NRG-NK	FoliMAX Phosphite+	FoliMAX Strength Si	FoliMAX Trace+	FoliMAX Turbo	FoliMAX Vigor-K
FoliMAX Amino+	-	C	C	C	C	C	C	C	C	C	C	C	C	C	CA	C	C	C
FoliMAX Calcium+	C	-	C	C	C	C	C	C	C	C	C	C	CA	NC	CA	C	CA	NC
FoliMAX Cal-Mag	C	C	-	C	C	C	C	C	C	C	C	C	CA	NC	CA	C	CA	CA
FoliMAX Humic+	C	C	C	-	CA	C	C	C	C	C	C	C	C	C	CA	C	C	C
FoliMAX Iron+	C	C	C	CA	-	CA	CA	C	C	C	CA	CA	C	CA	CA	C	C	C
FoliMAX KelMAX	C	C	C	C	CA	-	C	C	C	C	C	C	C	C	CA	CA	C	C
FoliMAX Launcher	C	C	C	C	CA	C	-	C	C	CA	C	C	C	CA	CA	C	C	C
FoliMAX Magnesium+	C	C	C	C	C	C	C	-	C	C	C	C	C	NC	CA	C	C	C
FoliMAX Manganese+	C	C	C	C	C	C	C	C	-	C	C	CA	CA	NC	CA	C	C	C
FoliMAX NFE	C	C	C	C	C	C	CA	C	C	-	C	C	C	C	CA	C	C	C
FoliMAX N-Forcer-N	C	C	C	C	CA	C	C	C	C	C	-	C	C	C	CA	CA	C	C
FoliMAX N-Hancer-N	C	C	C	C	CA	C	C	C	CA	C	C	-	C	C	CA	CA	C	C
FoliMAX NRG-NK	C	CA	CA	C	C	C	C	C	CA	C	C	C	-	CA	CA	C	C	C
FoliMAX Phosphite+	C	NC	NC	C	CA	C	CA	NC	NC	C	C	C	CA	-	CA	CA	NC	C
FoliMAX Strength Si	CA	CA	CA	CA	CA	CA	CA	CA	CA	CA	CA	CA	CA	CA	-	CA	CA	CA
FoliMAX Trace+	C	C	C	C	C	CA	C	C	C	C	CA	CA	C	CA	CA	-	C	C
FoliMAX Turbo	C	CA	CA	C	C	C	C	C	C	C	C	C	C	NC	CA	C	-	C
FoliMAX Vigor-K	C	NC	CA	C	C	C	C	C	C	C	C	C	C	C	CA	C	C	-

*FoliMAX Strength Si was added last to the mix

C = Compatible | CA = Compatible with agitation | NC = Not compatible



FOR MORE INFORMATION ON FoliMAX, CONTACT YOUR LOCAL TERRITORY MANAGER OR CALL 1800 631 008.

www.nuturf.com.au

EMAIL: FoliMAX@nuturf.com.au

