

Ecotex MulchMat[™]



PGG Wrightson Turf is proud to be distributing the new environmentally friendly Ecotex MulchMat[™]

- **Weed & Erosion Control**
- **Low Carbon Footprint**
- **Improved Growing Conditions**
- **Fully Biodegradable**
- **Fire Resistant**
- **Visually Pleasing**
- **Made from Wheat, Sugar Beet, Corn & Sugar Cane**

Ecotex MulchMat[™] is a new, organic weed suppression blanket which fully breaks down into nutritious matter over 3 to 5 years leaving no synthetic residues.

Ecotex MulchMat[™], which also passes the cigarette burn test* is an effective, easy to use economical solution for low maintenance weed control and moisture conservation in planted areas and has an extremely low carbon footprint making it one of the most environmentally sound methods available.

Ecotex MulchMat[™] is stronger, more durable, stable and easier to handle than any previous natural mulch fabrics and is inherently fire resistant, while the earthy brown colour blends harmoniously into the landscape.

Ecotex MulchMat[™] looks and feels like conventional non-woven, petrochemical derived (oil based) weed control fabric but is the only product made from an environmentally friendly alternative called Polylactic Acid (PLA) with 5% natural fibres (hemp) added for an even more natural look. PLA is a biopolymer made by fermenting plant sugars extracted from starch rich, 100% annually renewable vegetables such as corn or sugar beet, and the production requires fewer fossil fuel resources and generates less greenhouse gases compared to traditional plastic fabrics. Furthermore, Ecotex[™] felts can be composted resulting in complete decomposition and biodegradation of the material into water, carbon dioxide and nutrients.

Proven systems that reclaim and restore environments.

NEW ZEALAND

+64 3 966 9309

+64 9 570 2570

 pggwrightsonturf.com/nz/duraveg

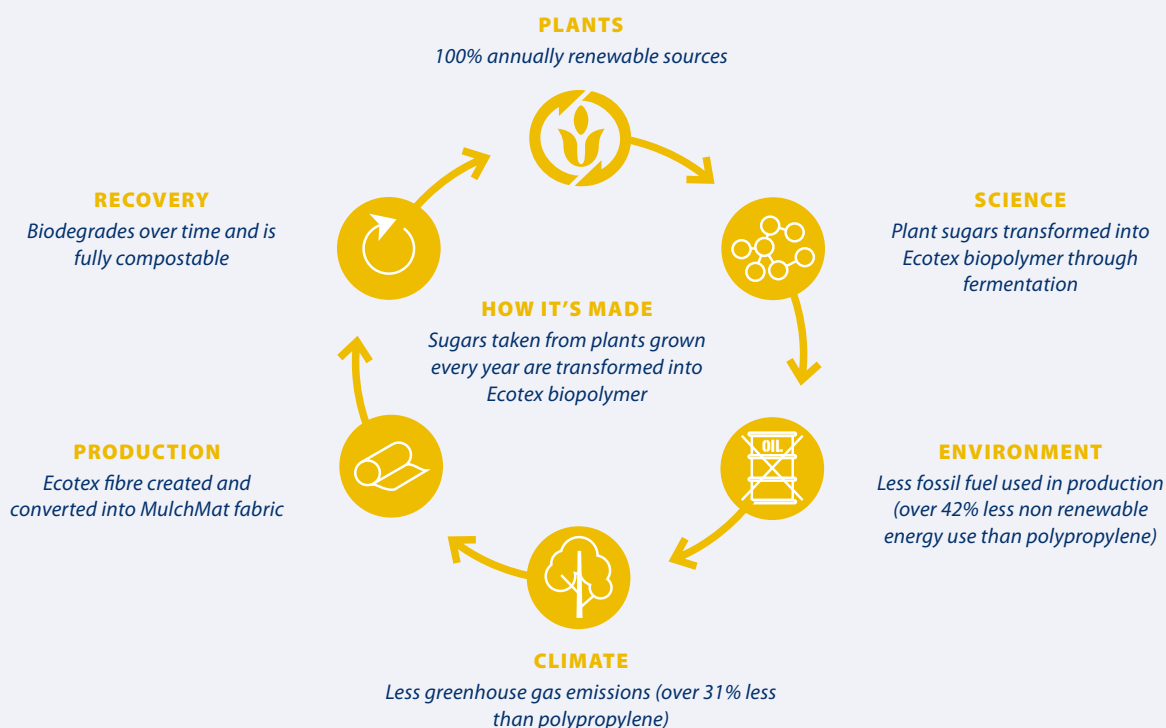
 [linkedin.com/company/duraveg](https://www.linkedin.com/company/duraveg)

PGG Wrightson Turf

Experts from earth to turf

TECHNICAL INFORMATION

TRAIT	ECOTEX MULCHMAT™
Composition	95% PLA (Polylactic Acid) 5% hemp fibre needle felt with heat fused underside
Colour	Brown
Weight [EN ISO 9864]	157g/m ²
Thickness [EN ISO 9863-1]	0.90mm
Tensile Strength md/cd [EN ISO 10319]	3kN/m
Elongation md/cd [EN ISO 10319]	>40%
Water Permeability [EN ISO 11058]	125 l/m ² /sec
Shade Factor	+95%
UV Resistance [UK climate]	50% strength loss after approx. 5 to 6 years
Biodegradability (Half life MW; 20°C - 70% RH)	Max 1000 days
Compostability [EN ISO 13432]	Fully certified
Fossil Energy Usage (PLA resin)	34 MJ/kg
CO ² Emission (PLA resin)	0 kg CO ² /kg PLA
*Smouldering Cigarette Test [EN ISO 12952 - 1/2]	No ignition
Roll Sizes	2.00 x 50.00m



Proven systems that reclaim and restore environments.

NEW ZEALAND

+64 3 966 9309
+64 9 570 2570

pggwrightsonturf.com/nz/duraveg
[linkedin.com/company/duraveg](https://www.linkedin.com/company/duraveg)